

# NORTHWEST MOSQUITO ABATEMENT DISTRICT

Keeping the community safe

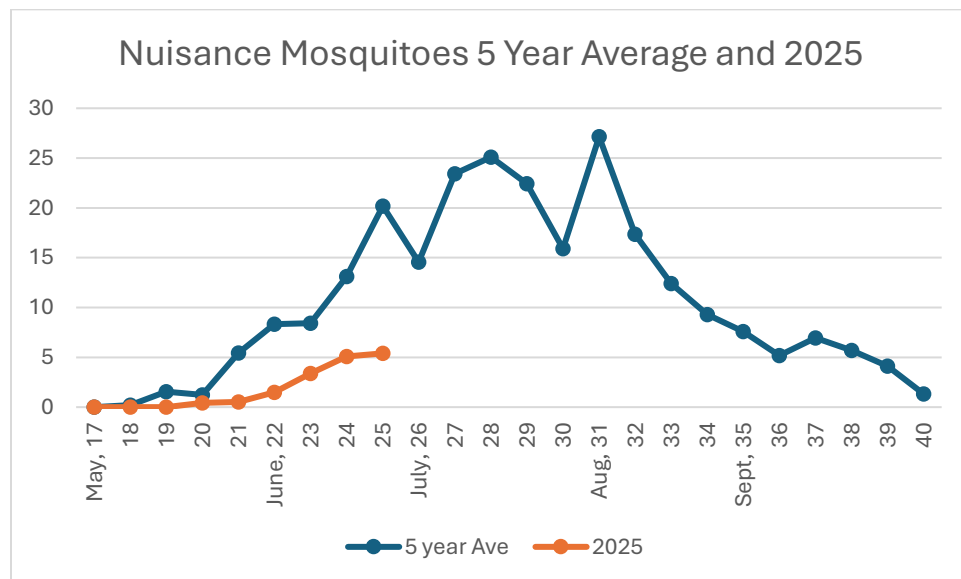
Weekly mosquito report for week 25

## Mosquito Surveillance:

Northwest Mosquito Abatement District operates 31 mosquito traps throughout the 242 square miles we cover. These traps help us track mosquito populations and West Nile virus. Traps run continuously from May 1 until October and mosquitoes are collected everyday Monday through Friday. All mosquitoes are identified to species. We test certain mosquito species for the presence of West Nile virus.

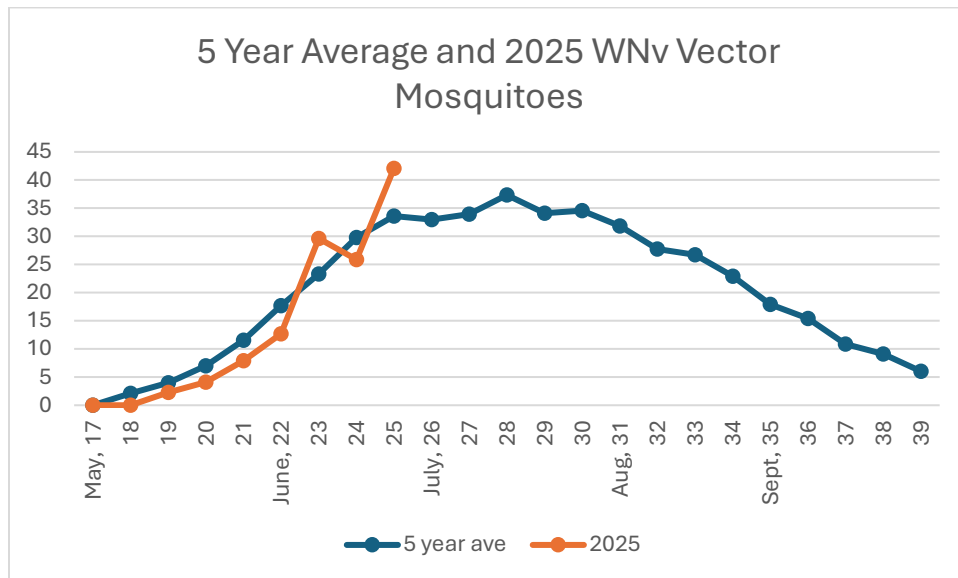
## Floodwater/nuisance mosquitoes.

These are the species of mosquitoes which are more likely to take blood meals from humans. These species come out 5-10 days after rainfall. These species populations tend to be higher in the late spring and early summer – historically peaking around the beginning of July. These mosquitoes live for about 2 weeks and tend to prefer shady forest areas.



## West Nile virus vector mosquitoes.

There are two main species of WNV vector mosquitoes, *Culex pipiens* and *Culex restuans*. These species prefer to feed on birds (which are the reservoir hosts for WNV) but will feed on humans opportunistically. In general, we tend to see the population of these mosquitoes increase during drought-like conditions

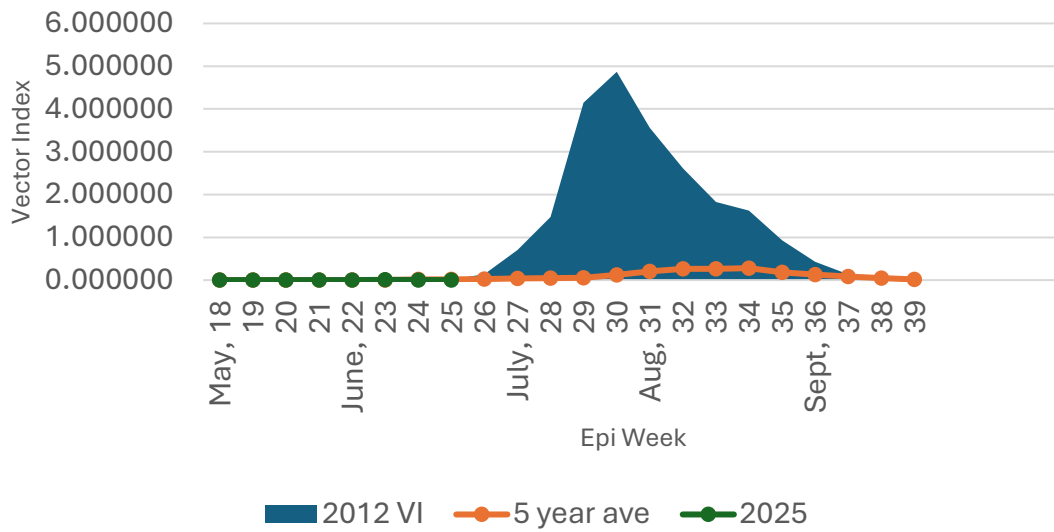


## West Nile virus detection in mosquitoes.

In our lab we test most, if not all, WNV vector mosquitoes for West Nile virus daily. From this data we can calculate the risk of transmission (Vector Index), allow us to monitor the infection rate over time, and better inform our field operations on where to focus our abatement. We tested 103 batches of mosquitoes last week and had no WNV positive. The Vector Index for the district is 0.000.

VI Range	Risk
0.0 - 0.2	Very low
0.21 - 0.99	Low
1.0 - 1.99	Moderate
> 2.0	High

Vector Index, 2012, 5-Year Average and 2025



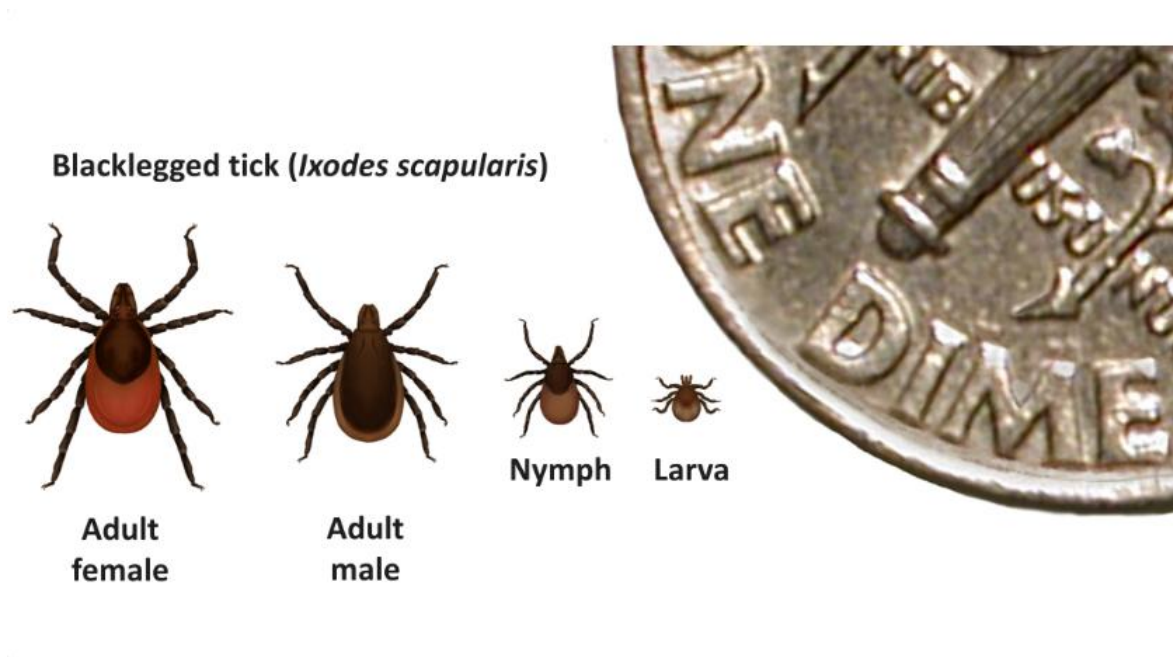
Village	Tested this week	Positive pools this week	Total # pools tested for WNV	Total Positive pools
Arlington Heights	5	0	41	0
Buffalo Grove	3	0	20	0
Barrington	8	0	35	0
Bartlett	3	0	16	0
Des Plaines	4	0	21	0
Elgin	6	0	27	0
Elk Grove	8	0	33	0
Glenview	6	0	27	0
Hoffman Estates	10	0	42	0
Northbrook	14	0	54	1
Palatine	2	0	20	0
Prospect Heights	4	0	12	0
Park Ridge	13	0	54	0
Rolling Meadows	9	0	21	0
Schaumburg	6	0	22	0
Streamwood	2	0	9	0
Wheeling	0	0	0	0
Total	103	0	454	1

## Tick Surveillance

We continue to conduct tick surveillance along Forest Preserve District trails. We are still finding nymphal deer ticks as well as adult deer and dog ticks. Nymphal ticks are more difficult for people to detect due to their tiny size.

We have conducted 65 separate drags (and found at least 1 tick during 59 of them) since mid-March through last week.

Tick Species (Common Name)	Life Stage	Number
D. variabilis (Dog Tick)	Adult	370
I. scapularis (Deer Tick)	Adult	280
I. scapularis (Deer Tick)	Nymph	99
A. americanum (Lone Star Tick)	Nymph	1



In general, adult ticks are approximately the size of a sesame seed and nymphal ticks are approximately the size of a poppy seed.

From the CDC